



Earn more money
with better planning

GreenPlan

- for plant growers

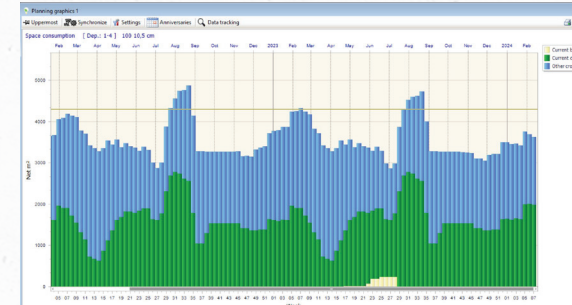
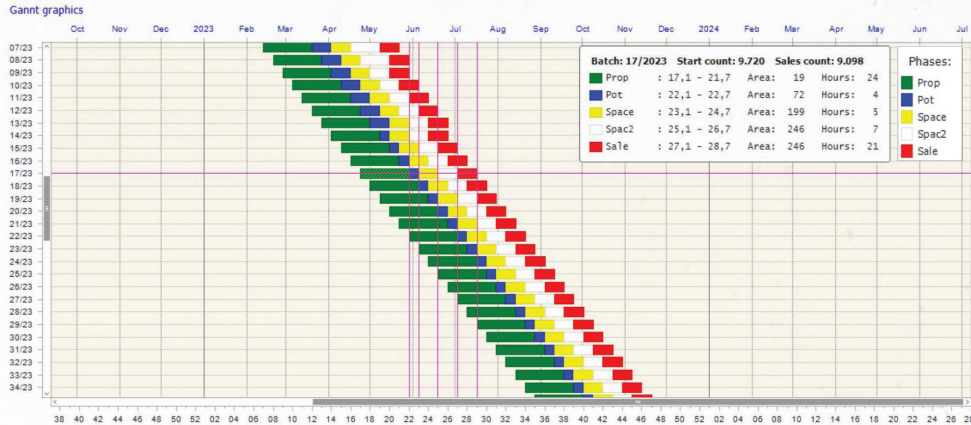


An IT tool developed in collaboration with growers!



HortiAdvice

GreenPlan - Manage your production planning and economic forecast.



	60	100	170	210	300	600		Total
Values	Net work m²	42.132	75.531	24.074	24.077	21.301	23.536	313.532
	Work hours	7.829	2.800	380	361	1.607	591	7.717
	Stock count	372.809	449.125	23.656	23.628	123.920	3.650	957.826
	Sales count	431.471	433.739	21.615	22.001			957.826
Sales	Sale (Net)	2.946.529	3.795.666	601.112	603.013			8.140.429
Sales costs	Packing	46.076	76.264	7.853				130.193
	Labour	212.219	168.712	15.951	16.124			413.006
	Machines							126.679
	Freight rates	35.558	99.952	13.500	36.668			185.678
	Sale fee							750.802
	Sale costs	299.860	346.927	37.313	52.801			736.802
	Sale (Net)	2.646.669	3.428.739	563.799	550.212			7.389.627
Prod. costs	Plant materials	-0.532	-7.056		-1.802			-18.411
	Licenses							488.326
	Materials	-150.090	-354.258	-159.746	-159.151	-137.640	-131.442	-1.207.299
	Labour	369.311	468.823	23.618	47.418	223.953	110.413	1.207.299
	Machines							126.679
	Heating	-11.912	-57.700	-6.970	-6.626	-66.646	-64.689	-403.595
	Process et	-18.807	-13.509	-245	-221	-7.326	-6.426	-63.546
	Greenhouse	-124.600	-279.328	-6.712	-6.611	-107.665	-109.209	-653.607
	CO ₂	-2.489	-2.363	488	811	11.440	10.895	-29.018
	miscellaneous	-116.517	-66.975	-4.124	-6.916	-137.661	-110.640	-658.181
	Prod. costs	430.429	1.265.806	209.102	246.236	461.745	416.170	3.849.779
Profit margin	Profit margin (gross)	3.832.280	2.518.922	358.066	503.985	683.765	416.170	3.849.887
	Operational margin	274.122	188.418			819.130		11.566
	Stock value prima	-187.413	-276.379			-65.344		-529.131
	Stock value ultima	246.815	276.418					523.233
	Profit margin (Net)	1.821.116	2.066.995	354.966	503.985	563.881	416.493	3.824.566
Fixed costs		426.000	488.267	101.081	100.195	133.224	146.227	1.340.833
	Result	819.216	1.508.328	249.877	403.791	396.525	400.720	1.963.713
Key figures	PM per started unit	3,50	4,48	15,30	21,31	31,2	174,53	8,31
	PM per sold unit	2,68	4,26	16,61	22,91			8,47
	PM per work m²	11,56	26,37	13,77	20,93	12,26	19,11	6,29
	PM per work hour	1.653,03	1.385,26	711,87	1.094,47	644,28	1.206,81	1.356
	Contribution ratio	45	53	59	63			61
	Result per sold unit	1,81	3,82	13,34	18,33			2,27
	Average price	5,87	9,02	28,00	36,50			8,51

GreenPlan is planning software designed for plant growers.

GreenPlan is highly focused on precise timing of sale and has a number of features making it easy to assure that the right mix of varieties and colours will be available in due time.

GreenPlan makes it immediately visible for the planner, whether a production is candidate for up scaling or down scaling.

- Forecast earning at crop level
- Plan according to your peak sales.
- Planning on day or week level
- Overview of production and consumption of plant material
- Multiple cultivation recipes per variety
- Graphical plan of your space consumption.
- Calculate the crops consumption of heat, electricity, CO₂ and growth light
- Price calculator for Added Value

Benefits for the user

- Easy use
- Easy look at planning alternatives
- Production plan and budget in the same process
- Quick overview of profit, costs or hours consumption
- Quick presentations to colleges on screen or handouts
- Data export tables for external use/analyses.

“GreenPlan gives a quick graphical overview of calculated profit, costs or hours consumption”



Charlotte Holde

HortiAdvice
Hvidkaervej 29
DK 5250 Odense SV
Mail : greenplan@hortiadvice.dk
Cell : + 45 23 49 66 14
Web : www.hortiadvice.dk



Jens Jørgensen

HortiAdvice
Agro Food Park 15
DK 8200 Aarhus N
Mail : greenplan@hortiadvice.dk
Cell : + 45 23 66 31 37
Web : www.hortiadvice.dk



Nikolaj Bøggild

HortiAdvice
Agro Food Park 15
DK 8200 Aarhus N
Mail : greenplan@hortiadvice.dk
Cell : + 45 41 10 20 75
Web : www.hortiadvice.dk